



# UIA2020RIO

27th World Congress of Architects

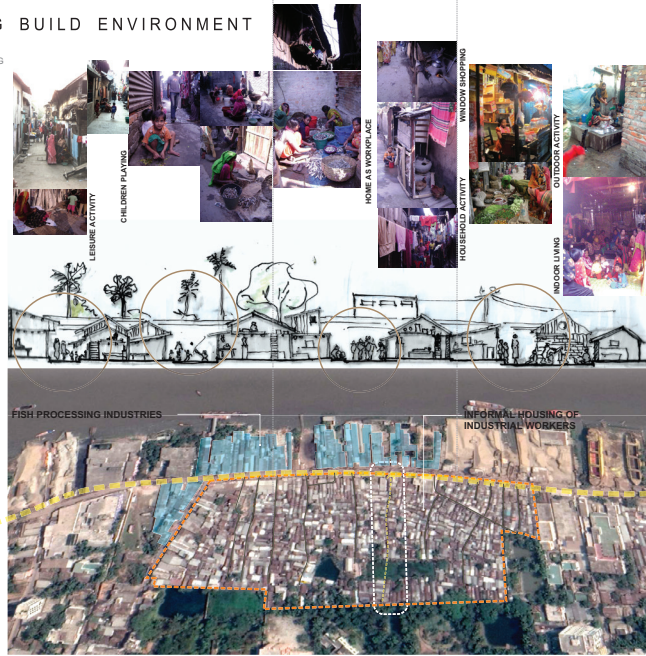
**Project Name:** COMMUNITY RESPONSIVE REGENERATION APPROACH FOR AN AFFORDABLE HOUSING

**Author :** AR. SHAFIQUE RAHMAN

**Country:** BANGLADESH

## ANALYSIS OF EXISTING BUILD ENVIRONMENT

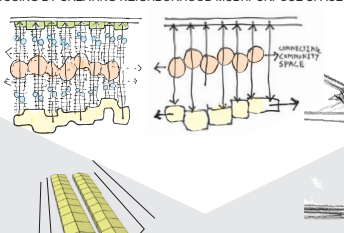
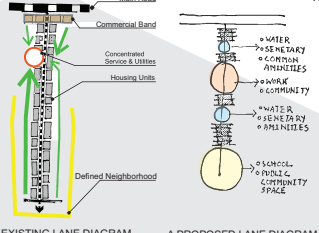
EXTENDED FAMILY - LIVING IN THE SAME HOUSE - HORIZONTAL EXPANSION - RESULTING IN HUMAN LIVING CONDITION AND DEFICIENCY OF OPEN SPACES



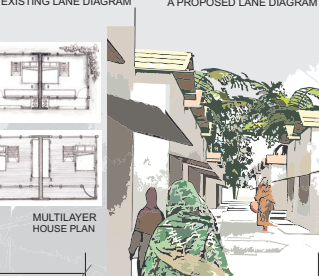
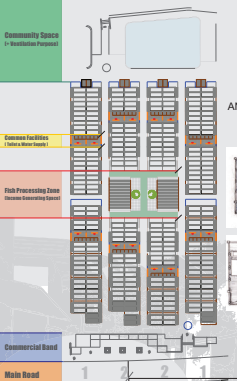
## SPATIAL AND MORPHOLOGICAL ANALYSIS OF EXISTING HOUSING SETTLEMENT

INTERCONNECTED COMMUNITY SPACES FACILITATE REGENERATED AFFORDABLE HOUSING BY CREATING NEIGHBORHOOD MULTIPURPOSE SPACE

### ANALYSIS OF EXISTING LANE



### REDESIGN OF A CLUSTER



## CONCEPT AND PREAMBLE

Khulna is a city located in the southern part of Bangladesh has a population of 1.4 million in an area of 59.57 sq.km. Traditionally established as river front development, Khulna has its own pattern of cluster type settlement with industrial development. The urban fabric along Rupsha river dominated by various small industries resulted some informal, sub-standard and sometimes illegal settlements.

The case study is a squatter settlement accommodating 6000 people in an area of 2.29 Acre. 800 families living in this housing mostly involved in the adjacent fish processing industries. This organically grown housing has a unique characteristic, such as the houses are being used as industrial workplace. Female and children are involved in income generation, however working from own houses or vicinities.

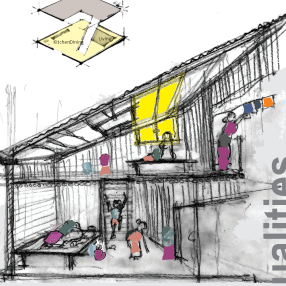
This housing structure has a completely different urban environment which at first sight appears to be diffused, and disorganized within an individual island of geometrically structured patterns. To the outsider it may look chaotic but in reality this settlement is an extremely complex field of human compromise, mutual support, mutual dependence and resourcefulness from all its different residents.

With the increasing family members the housing has become overpopulated and crowded, resulting lack of very basic human needs, for example sanitation, green and adequate living space. The house forms are about 9-12 sq-m accommodating 6 to 8 members of a family.

The idea for regenerating a comprehensive and affordable housing for this urban poor community was to vertically extend without interrupting their spatial organization, indigenous fabric and social system, resulting a culture led sustainable regeneration.



PROPOSED MULTILAYER LOWCOST HOUSE FORM



## TRANSFORMATION

MULTI LAYER ACCOMMODATION CREATES SPACES FOR COMMUNITY - EMERGES GREEN ENVIRONMENT



Vulnerabilities and Inequalities

All the worlds. Just one world  
Architecture 21

